



Vicarage Road, Epping, CM16

BUTLER & STAG



This stunning four-bedroom semi-detached family home is located in the highly sought-after Vicarage Road, Coopersale, within walking distance to the charming village shops, a local public house restaurant, and the scenic surroundings of Epping Forest and Stonards Hill.



Freehold

- Semi Detached Family Home
- Four Bedrooms/Two Bathrooms
- Two Receptions
- Well Presented Throughout
- Detached Garage To Rear/Off Street Parking
- CHAIN FREE

The property offers spacious and versatile accommodation, perfect for modern family living.

Upon entering, the home features an entrance porch leading to a welcoming inner hallway. The ground floor includes a generously sized lounge, a kitchen breakfast area with doors that open onto the beautifully maintained north-facing garden, and a cozy living room complete with a log burner. The first-floor landing provides access to the master bedroom, three additional well-proportioned bedrooms, and two bathrooms, one of which features a stylish three-piece suite.

Outside, the front aspect boasts a block-paved driveway providing off-street parking for several vehicles, with side access leading to the rear garden and a detached garage. The rear garden is primarily laid to lawn and features a stone patio, perfect for outdoor dining and relaxation.

Ideally located, the property is within easy walking distance of the Village High Street and the local amenities it offers. Vicarage Road is also close to the picturesque arable farmland and the natural beauty of Epping Forest. The larger town of Epping is approximately 1.25 miles away and provides excellent transport links, including a Tube Station on the Central Line for easy access to London, as well as close proximity to the M25, M11, and A414 for convenient travel further afield. This is a truly exceptional family home in an idyllic location.

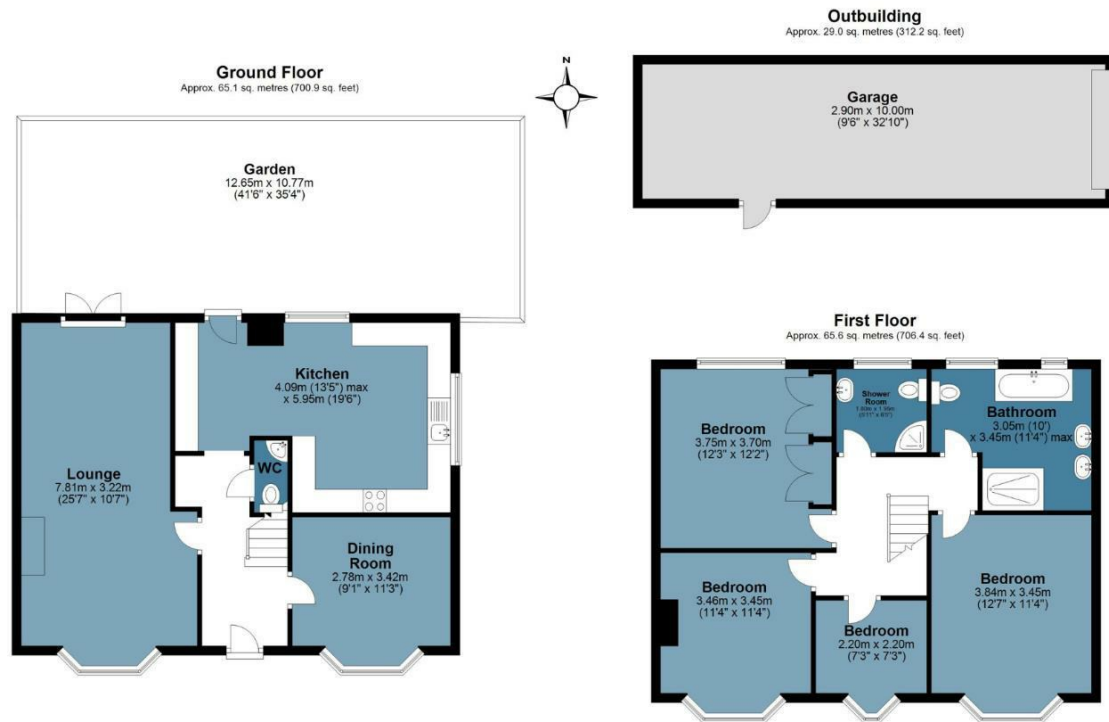




Vicarage Road



Approx. Gross Internal Area 159.7 sq. metres 1719.5 sq. feet)



Measurements are approximate and for illustration purposes only. While we do not doubt the accuracy and completeness, we advise you conduct a careful independent assessment of the property to determine monetary value
© @modephotouk www.modephoto.co.uk



☎ 01992 667666

🏠 4 Forest Drive, Theydon Bois, Essex, CM16 7EY

✉ theydon@butlerandstag.com

www.butlerandstag.uk

IMPORTANT NOTICE - These particulars have been prepared in good faith and they are not intended to constitute part of an offer or contract. We have not performed a structural survey on this property and the services, appliances and specific fittings have not been tested. All photographs, measurements, floor plans and distances referred to are given as a guide and should not be relied upon.